

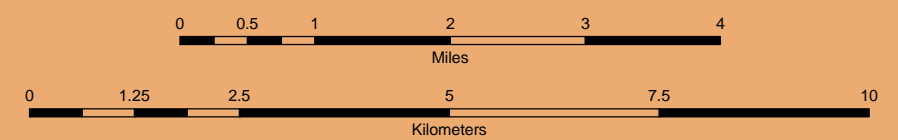
1 Seven of the most popular hikes in the Scotchmans are marked on the map using this symbol. For a description of these hikes, see "Hiking in the Scotchmans" on the reverse side.

Scotchman Peaks

Maps produced by Bradley E. Smith
Concept, layout and production by books@bluecreekpress.com

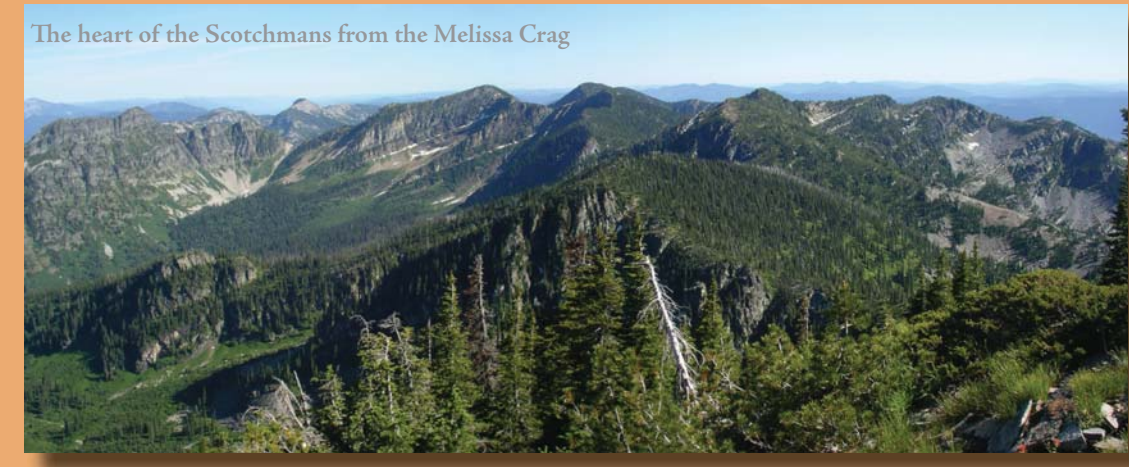
Legend

- | | |
|-------------------------------|---|
| Points of Interest | Roads and Trails |
| + Peak | Trailhead |
| f Lookout | Campground |
| △ Former Lookout | Picnic Area |
| • Spring | Historic Site |
| • Gaging Station | Giant Cedar Grove |
| • Snotel Site | |
| • Town | |
| | Highway No. |
| | Highway |
| | Primary Access Road |
| | Improved Road |
| | Unimproved Road |
| | Trail |
| | Unmaintained Trail |
| Boundaries | Ownership |
| Stataline | (Within proclaimed Forest Service Boundaries) |
| Forest Service Boundary | Private Inholdings |
| Scotchman Peaks Roadless Area | State Lands |
| Cabinet Mountains Wilderness | Private Timberlands |
| Ross Creek Cedars Scenic Area | |

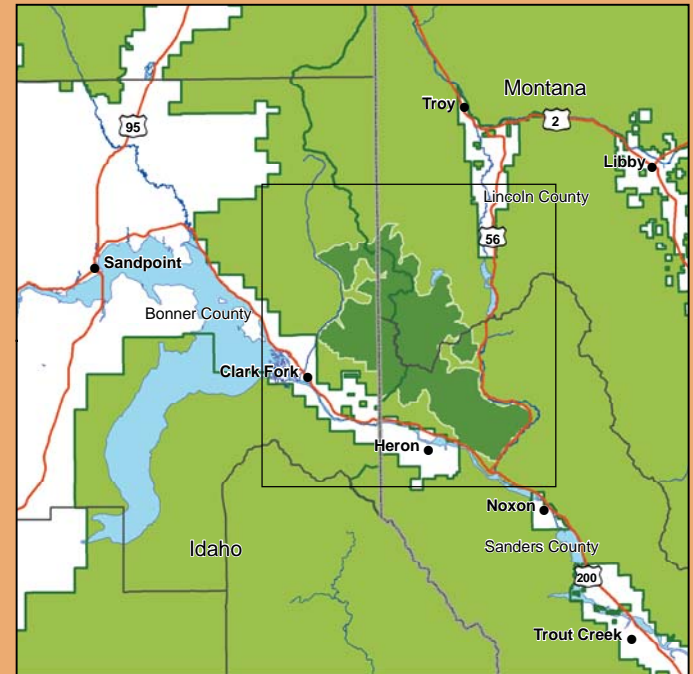


1:45,000

North American Datum of 1927
UTM Zone 11 North



Vicinity Map



2010
Bold contours every 1000 feet
Light contours every 100 feet
Elevations shown in feet
Meters equal feet multiplied by 0.3048

